

Map A: Geologic Map By R.J. McLaughlin, A.M. Sarna-Wojcicki, R.J. Fleck, V.E. Langenheim, C.A. McCabe, and Elmira Wan

DESCRIPTION OF MAP UNITS

- Artificial fill** (Aif)
- Alluvium, undivided (Holocene)** (Qa)
- Basin deposits (Holocene)** (Qb)
- Channel (Holocene)** (Qc)
- Alluvial fan and fluvial terrace deposits, undivided (Holocene)** (Qd)
- Channel (Holocene)** (Qe)
- Young Holocene alluvial fan and fluvial terrace deposits** (Qf)
- Old Holocene alluvial fan and fluvial terrace deposits (Holocene?)** (Qg)
- Natural levee deposits (Holocene)** (Qh)
- Alluvial deposits, undivided (Holocene and Pleistocene)** (Qi)
- Colluvium (Holocene and Pleistocene)** (Qj)
- Alluvial deposits, undivided (Holocene and Pleistocene)** (Qk)
- Alluvial fan and terrace deposits (Holocene and Pleistocene?)** (Ql)
- Younger alluvial fan and terrace deposits (Holocene and Pleistocene?)** (Qm)
- Older alluvial fan and terrace deposits (Holocene and Pleistocene?)** (Qn)
- Landslide deposits (Holocene and Pleistocene)** (Qo)
- Other alluvium, undivided (Pleistocene)** (Qp)
- Alluvial fans and fluvial terrace deposits, undivided (Pleistocene)** (Qq)
- Volcanic tuff breccia (Pleistocene?)** (Qr)
- Alluvial deposits, undivided (Holocene and Pleistocene)** (Qs)
- Fluvial and lacustrine deposits (early Pleistocene and Pleistocene)** (Qt)
- Tertiary rocks**
  - Silica carbonate rock (Pliocene-Miocene?)** (Tb)
  - Gravel of the Cloverleaf Ranch (Pliocene?)** (Tc)
  - Fluvial and lacustrine deposits of Humboldt Creek (Pliocene)** (Td)
  - Wilson Grove Formation (Pliocene and Miocene)** (Te)
  - Petaluma Formation (Pliocene and Miocene)** (Tf)
- PRE-TERTIARY ROCKS**
  - Great Valley Sequence and Coast Range Ophiolite, undivided (Cretaceous and Jurassic)** (K)
  - Central Belt of the Franciscan Complex (Upper Cretaceous to Lower Tertiary)** (J)
  - Undifferentiated mélange** (M)
  - Blueschist blocks** (N)
  - Radiolarite chert of Marin Headlands-Crocker terrace** (O)
  - Basaltic volcanic rocks** (P)
- LATE TERTIARY VOLCANIC ROCKS**
  - Sonoma Volcanics (Pliocene and Miocene)** (S)
  - Dacitic flows** (D)
  - Rhyolite and rhyolitic flows and intrusive rocks** (R)
  - Rhyolite to dacitic and minor andesitic pumiceous tuff** (T)
  - Crystal-rich rhyolite to rhyolitic welded tuff** (W)
  - Andesite to rhyolitic breccia (Pliocene)** (B)
  - Andesite, basaltic andesite and basalt** (A)
  - Andesite to dacitic tuff, breccia and minor flows** (F)
  - Tuff volcanics (Miocene)** (V)

- Diastolic and diastemose mudstone** (D)
- Lignite and lignitic mudstone** (L)
- Siltified (petrified) wood** (S)
- Limestone** (L)
- Breccia** (B)
- Gravel lenses** (G)
- Contact** (C)
- Fault** (F)
- Normal fault** (NF)
- Three fault** (TF)
- Fault lineament** (FL)
- Fault scarp** (FS)
- Anticline** (A)
- Overturned syncline** (OS)
- Minor syncline** (MS)
- Closed depression or sag pond** (CD)
- Strike and dip of beds** (SD)
- Inclined** (I)
- Vertical** (V)
- Approximate** (AP)
- Strike and dip of foliation in cleaved or folded rock** (SDF)
- Vertical or near vertical** (VNV)
- Strike and dip of volcanic flow units** (SDFV)
- Radiolite** (R)
- Basaltic** (B)
- Area of hydrothermal alteration** (A)

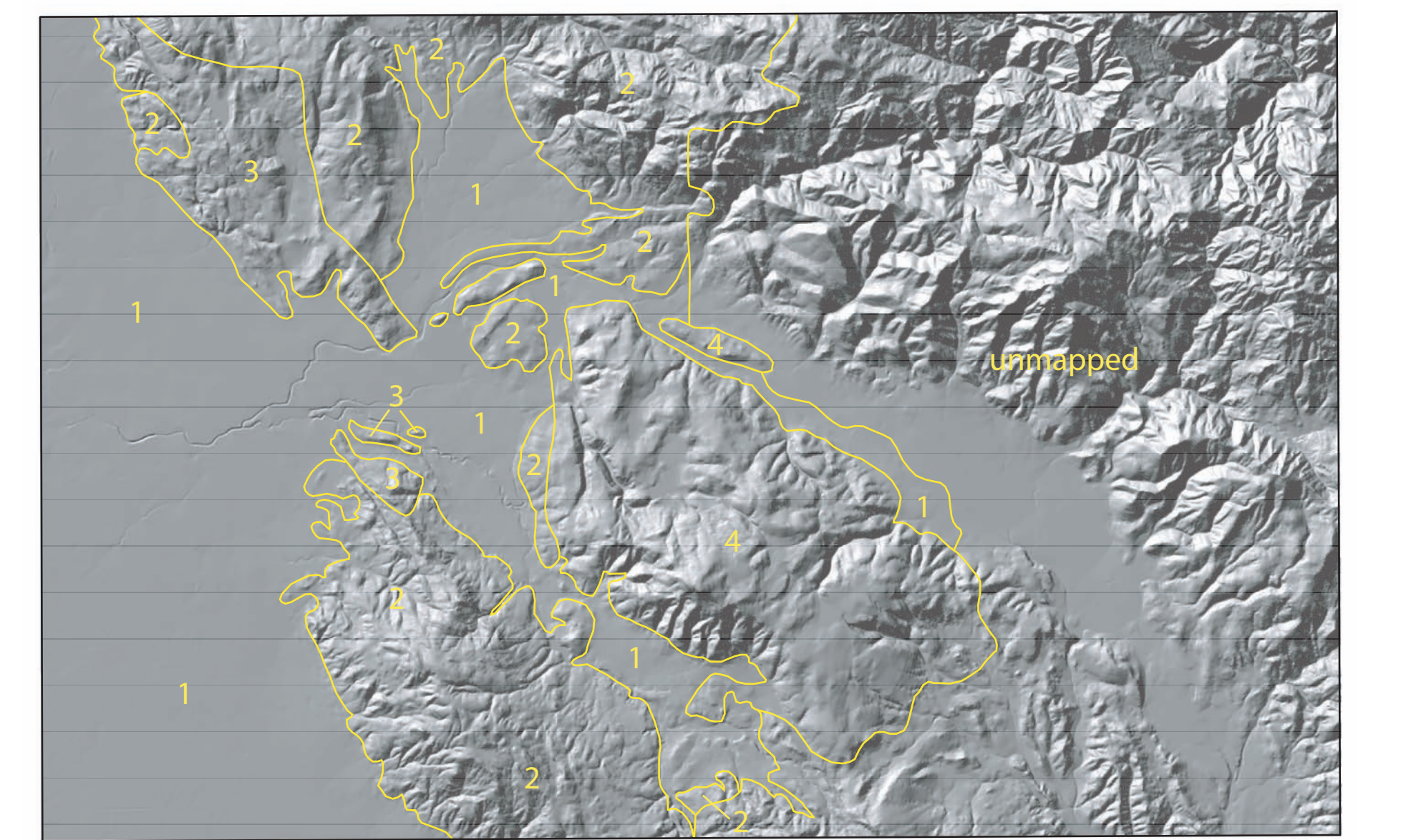


Figure 2. Sources of Geologic Mapping in the Santa Rosa and western Healdsburg 7.5' quadrangles. Mapping in parts of Santa Rosa quadrangle began in 1996, together with work in adjacent quadrangles. The mapping presented here was completed in September, 2005.

CORRELATION OF MAP UNITS

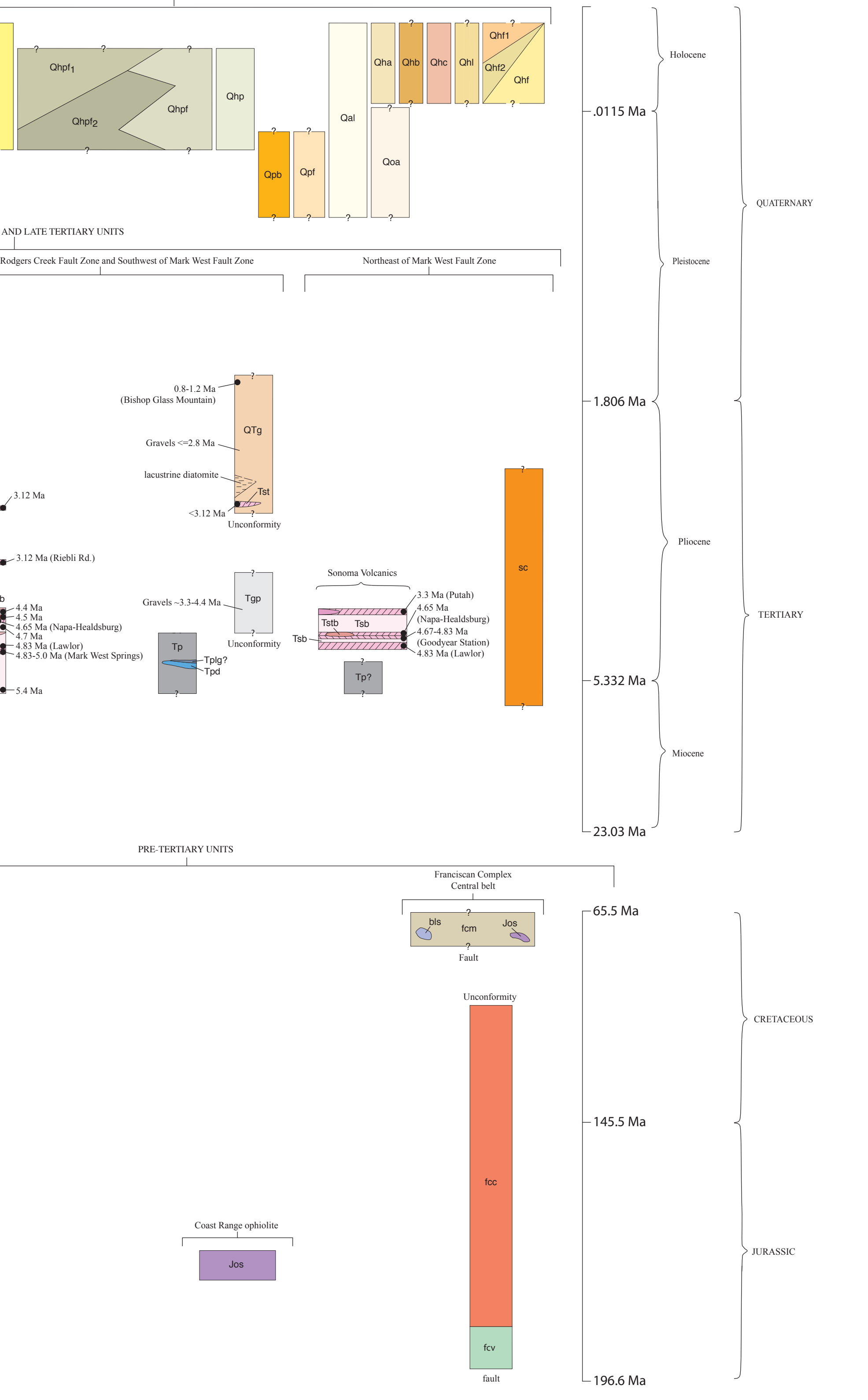


Figure 1. Index map showing location of Santa Rosa 7.5' quadrangle (red box) within the grids of Napa and Healdsburg 30' quadrangles, northern California. Green box in inset map shows location of index map.

Geologic and Geophysical Framework of the Santa Rosa 7.5' Quadrangle, Sonoma County, California

By R.J. McLaughlin<sup>1</sup>, V.E. Langenheim<sup>1</sup>, A.M. Sarna-Wojcicki<sup>1</sup>, R.J. Fleck<sup>1</sup>, D.K. McPhee<sup>1</sup>, C.W. Roberts<sup>1</sup>, C.A. McCabe<sup>1</sup> and Elmira Wan<sup>1</sup>

<sup>1</sup>U.S. Geological Survey, 345 Middlefield Road, Menlo Park, CA 94025

Any use of trade, firm, or product names in this publication is for descriptive purposes only and does not imply endorsement by the U.S. Government. This map was prepared on an electronic graphic directly from digital files. Dimensional control was very between electronic vectors and between a hard copy printout on the one hand, and paper may change size with atmospheric conditions, therefore, scales and proportions may not be true to print of this map. Digital files available on World Wide Web at <http://pubs.usgs.gov/ofr/2008/1009/>