



# What's New: Fall 2018

University Library ■ Sonoma State University ■ [library.sonoma.edu](http://library.sonoma.edu)

## Welcome Catherine Fonseca!



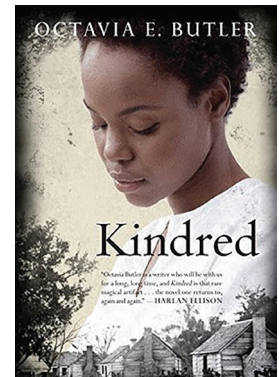
Catherine Fonseca is our new tenure-track Outreach and Inclusion Librarian. In this role, Catherine develops and implements library programs designed to meet SSU community needs. Additionally, Catherine coordinates targeted efforts to reach underserved and vulnerable student populations to improve student success through an increased use of library resources and services. Catherine joins us from Bloomington, Indiana, where she earned a dual Master's in Library Science and Latin American Studies at Indiana University. Catherine looks forward to working directly with student groups and building

relationships with student-centered units and programs across SSU, especially those supporting traditionally underserved communities. If interested in collaborating, contact Catherine at [fonseca@sonoma.edu](mailto:fonseca@sonoma.edu).

## Dinner Table Talk: Kindred

Join us in the University Library for dinner and a discussion of Octavia Butler's groundbreaking novel, *Kindred*. First published in 1979, *Kindred* explores a number of questions about the legacy of slavery in the United States, gender, race and power, historical memory and trauma, and the meaning of freedom through a fascinating combination of time travel story and slave narrative.

*Kindred* has been widely acclaimed since its publication and remains one of Butler's most popular novels. Come to Schulz 3001 at 6:00 p.m. on Wednesday, November 7, 2018 for (free!) dinner and a great conversation. All are welcome. RSVP by emailing [library@sonoma.edu](mailto:library@sonoma.edu)



## Reflections: After the Fire

The Library's fall 2018 exhibit, *Reflections: After the Fire*, is a group show featuring the works of 21 California-based artists and videographers documenting and responding to the fall 2017 firestorm through painting, photography, video, and mixed media work. The show is located in both the Library Gallery and the 2North exhibit area and will be open from Monday, August 20, through Friday, December 14. Please join us for a reception on Wednesday, October 17, from 4:00-5:30 p.m. RSVP to [library@sonoma.edu](mailto:library@sonoma.edu) for a reception parking pass. Otherwise parking is \$5 all other times.

## Very Short Introductions

This year, thanks to the Provost's Innovation Grant, our library was able to purchase the entire collection of Oxford University Press's Very Short Introductions. This collection includes over 500 volumes, and each volume provides a brief, accessible introduction to a wide-range of topics across disciplines, from Geopolitics to Forensic Science to Heidegger. The books are excellent resources for students who are just beginning to explore new ideas, historical events, people, and places. The collection is located on the 2nd floor near the Research Help desk and has already proved to be a well-loved addition to the library.

## Sonoma County Women's History Highlighted in Special Collections



In the spring of 2007 history professor Michelle Jolly asked her students to interview women who had been at the forefront of 40 years of feminist activism in Sonoma County. The result was an exhibit at the University Library and the creation of a valuable collection of historical materials which Professor Jolly donated this year to Special Collections.

The collection is already drawing attention both on and off campus, and will be valuable for its insights on local and national women's issues, especially relevant as the United States looks

ahead to the centennial celebrations of women's suffrage in 2020. Make an appointment to view this or any of our Special Collections: [library.sonoma.edu/specialcollections/contact](http://library.sonoma.edu/specialcollections/contact).

### Foundations and Explorations

Stop by and browse our new Foundations and Explorations collection located on the 2nd floor of the library. The Library faculty are piloting this "micro-collection" project, comprised of about 2,000 books on introductory and engaging topics across the disciplines pulled from our larger collection. The goal is to provide an approachable and engaging introduction to the Library's print book collection and the Library of Congress classification system. We hope that students will browse this condensed collection and begin to get a sense of the range of scholarship across disciplines and will be inspired to explore topics outside of their comfort zones. If you'd like to talk about ways to incorporate this into your instruction, reach out to your subject librarian. Let us know what you think!

### Library Student Advisory Council

The Library is recruiting student representatives from a variety of backgrounds and experiences for the library's Student Advisory Council (LSAC). Established in spring 2018, LSAC meets approximately six times a year to work on issues of common interest between Seawolves and the Library. Councilors serve campus by:

- Advising Library policies and services affecting students.
- Offering student perspectives on Library issues.
- Gathering input from other SSU undergraduate and graduate students.

Do you know any students who might be interested in this role? If so, please contact Kaitlin Springmier at [kaitlin.springmier@sonoma.edu](mailto:kaitlin.springmier@sonoma.edu) with recommendations.

### Facts and Figures

During the 2017-2018 academic year, the University Library:

- Received more than 420,000 walk-ins, peaking during 24/7 Finals hours.
- Checked out nearly 50,000 items to Library users. Of these, 16,000 were course reserves and 10,000 were lending laptops.
- Taught 248 information literacy sessions, reaching more than 7,000 students.
- Reserved its 15 study and viewing rooms for more than 21,000 hours.
- Answered more than 1,000 research and special collections questions.
- Welcomed more than 3,000 participants in outreach activities that included orientation events, art exhibit receptions, a panel discussion about women in politics, Dinner Table Talks, and guided tours and research sessions for local K-12 students.
- The Makerspace was open over 1,000 hours in 2017/2018 and provided over 50 lab sessions and workshops.